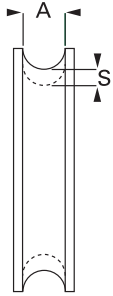
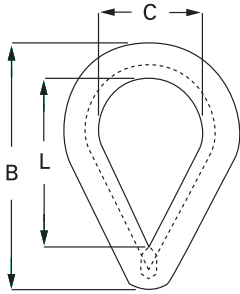


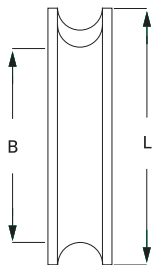
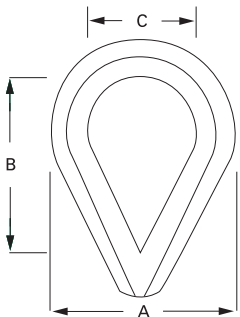
Galvanised BS 464 Thimbles



Rope Dia	A mm	B mm	L mm	C mm	S mm	Weight Kgs/100	Code
1/4"	7	45	26	18	4	4.1	D0201
5/16"	8	54	33	22	4	6.5	D0202
3/8"	10	64	38	25	4.8	9.5	D0203
1/2"	14	80	44	32	5.6	13	D0204
5/8"	16	98	59	41	7.9	30	D0205
3/4"	21	124	73	51	9.5	51.5	D0206
7/8"	22	133	83	57	9.5	69.0	D0207
1"	27	162	108	70	10.3	99.5	D0208
1 1/8"	29	178	111	76	12.7	129	D0209
1 1/4"	33	197	133	95	12.7	145	D0210
1 3/8"	38	229	152	105	15.9	238	D0211
1 1/2"	41	254	165	114	17.5	340	D0212
1 5/8"	43	254	165	114	17.5	499	D0213
1 3/4"	51	286	178	127	25.4	532	D0214
2	64	330	203	140	28.6	695	D0215

The thimbles detailed above will meet the performance requirements of the new Standard BS-EN-13411

Heavy Duty Galvanised Thimbles meet the performance requirements of US Fed Spec FF-T-276-b Type 3

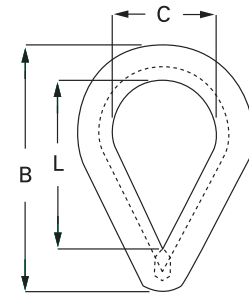


Rope Dia Inches	L inches	A inches	B inches	C inches	Weight Kgs/100	Code
1/4"	2 3/16"	1 1/2"	1 5/8"	7/8"	3.4	D0301
5/16"	2 1/2"	1 13/16"	1 7/8"	1 1/16"	6.3	D0302
3/8"	2 7/8"	2 1/8"	2 1/8"	1 1/8"	11.3	D0303
7/16"	3 1/4"	2 3/8"	2 3/8"	1 1/4"	16.2	D0304
1/2"	3 5/8"	2 3/4"	2 3/4"	1 1/2"	23	D0305
9/16"	3 5/8"	2 11/16"	2 3/4"	1 1/2"	23	D0306
5/8"	4 1/4"	3 1/8"	3 1/4"	1 3/4"	33.8	D0307
3/4"	5"	3 13/16"	3 3/4"	2"	66.2	D0308
7/8"	5 1/2"	4 1/4"	4 1/4"	2 1/4"	83.3	D0309
1"	6 1/8"	4 15/16"	4 1/2"	2 1/2"	135	D0310
1 1/8 1 1/4"	7"	5 7/8"	5 1/8"	2 7/8"	184.5	D0311
1 3/8 1 1/2"	9"	7 7/8"	6 1/2"	3 1/2"	540	D0313
1 5/8"	11 1/4"	8 1/8"	8"	4"	731.3	D0314
1 3/4"	12 13/16"	8 1/2"	9"	4 1/2"	810	D0315
1 7/8-2"	15 1/8"	10 3/8"	12"	6"	1,170	D0316
2 1/4"	17 7/8"	11 7/8"	14"	7"	1,935	D0317

The thimbles detailed above will meet the performance requirements of the new Standard BS-EN-13411

Galvanised Fibre Rope Towing Thimbles

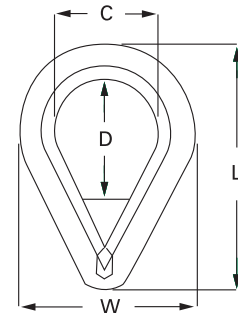
Rope Circ	A mm	B mm	L mm	C mm	S mm	Weight Kgs/each	Code
5"	45	200	165	85	6	1.5	D0501
6"	60	230	185	95	8	3	D0502
7"	65	270	220	115	8	4	D0503
8"	70	300	250	120	10	6	D0504
10"	95	390	315	150	12	14	D0506
12"	105	415	340	175	12	15.5	D0507



ALSO AVAILABLE WITH FILLET PLATE, RETAINING BANDS AND ALLOY LINKS

Galvanised Forged Steel Pennant Line Thimbles

Wire Rope Dia inches	Groove mm	L mm	W mm	D mm	C mm	Weight Kgs/each	Code
24 -22 "	65	490	305	255	178	24	D0708
3"	85	540	300	300	180	28	D0712



Galvanised Commercial Thimbles

(not suitable for lifting applications)

Rope Dia mm	L mm	A mm	B mm	C mm	Weight Kgs/100	Code
2.5	22	16	19	12	0.5	D0119
3.5	26	17	21	13	0.8	D0120
4	25	19	16	11	0.4	D0101
5	31	22	22	16	0.8	D0102
6	37	29	26	19	1.4	D0103
8	51	38	34	24	2.8	D0104
10	64	44	42	32	4.8	D0105
12	76	57	51	38	8	D0106
14	82	60	57	40	10	D0107
16	89	64	60	42	15	D0108
18	102	69	67	45	22	D0109
20	115	79	76	51	25	D0110
22	127	89	83	54	32	D0111
24	140	102	88	64	46	D0112
26	152	105	102	68	66	D0113
28	165	115	110	73	77	D0114
30	178	121	115	79	80	D0115
32	203	133	140	93	130	D0116
36	229	184	177	115	540	D0117
40	254	206	198	120	730	D0118

